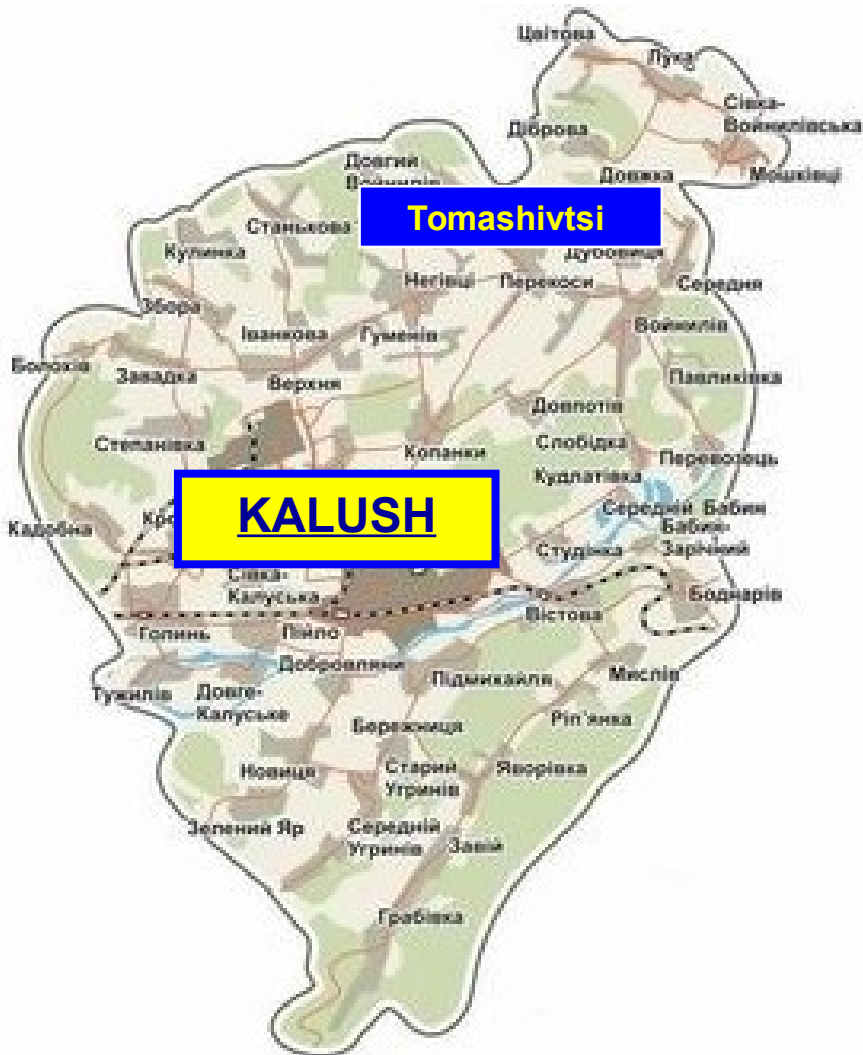


**Lot land**

**«Hospodarskyi Dvir»**

# General information



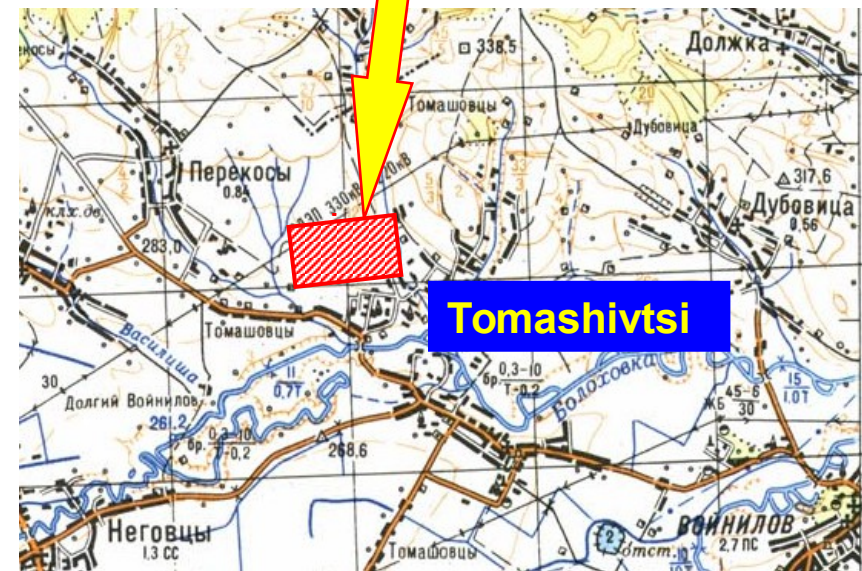
- Land type Green-field.  
Land plot area - 12,00 ha
- The distance to the village - 0,35 km.
- Distance to the nearest house - 0,5 km.
- Name of the nearest district center,  
distance – Kalush, 20,0 km
- Name of the nearest regional center,  
distance Ivano – Frankivsk, 47,0 km.
- Geographic coordinates : 49°09'04.6"N

24°25'30.1"E

- The relief is flat

---

- A mark above sea level - 265,0m
- The difference between the highest and lowest marks the site - 1,2m.
- At a distance of 0,3 m river runs Bolohivka
- A protection zone is the area of sanitation "Lukor"
- On land there are ground obstacle - power lines





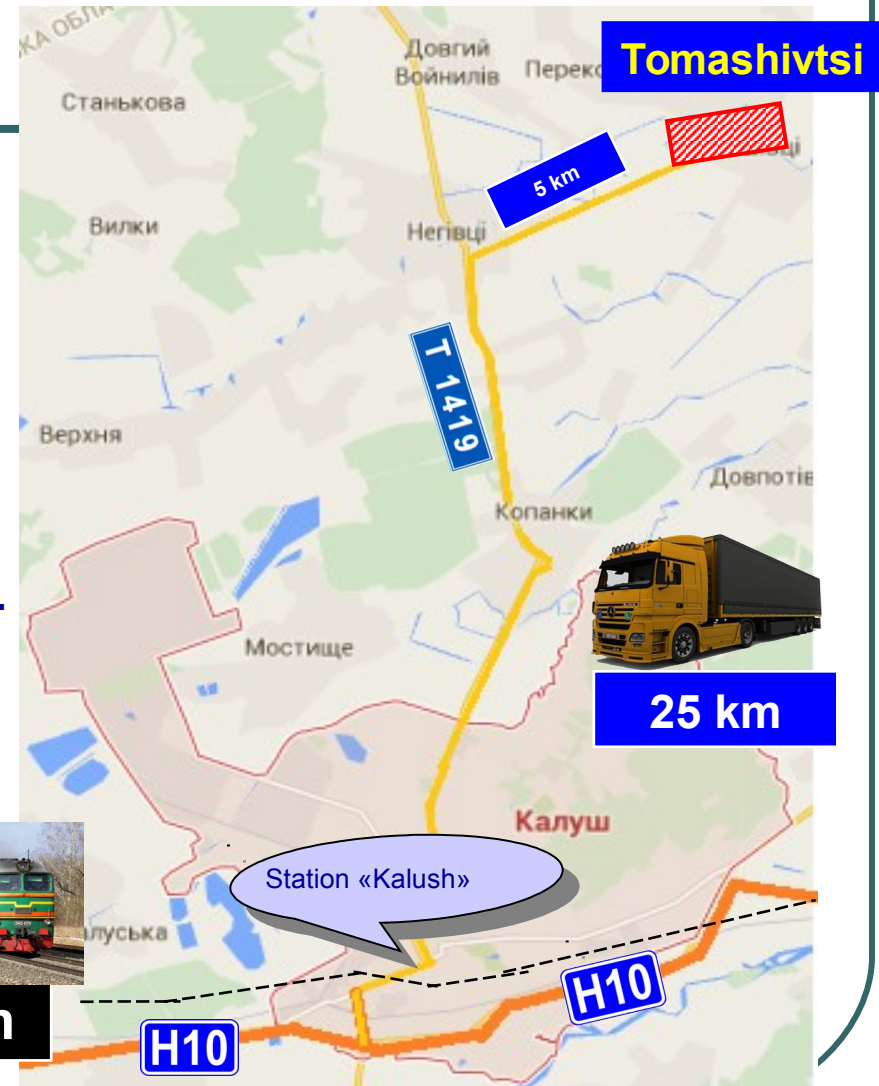
# **Legal status**

---

- **Form of ownership - community property**
- **Owner - Tomashivtsi Village Council**
- **Title documents of the owner – absent**
- **The land plot is located within or outside of the settlement limits - within the populated area**
- **Designated purpose of the land plot - 01. agricultural land**
- **Legal restrictions – no**
- **Land area is not used**
- **Form of transfer of land - long lease**
- **Approximate cost of land for rent – 50,0 UAH/sq.m**

# Transport and engineering infrastructure

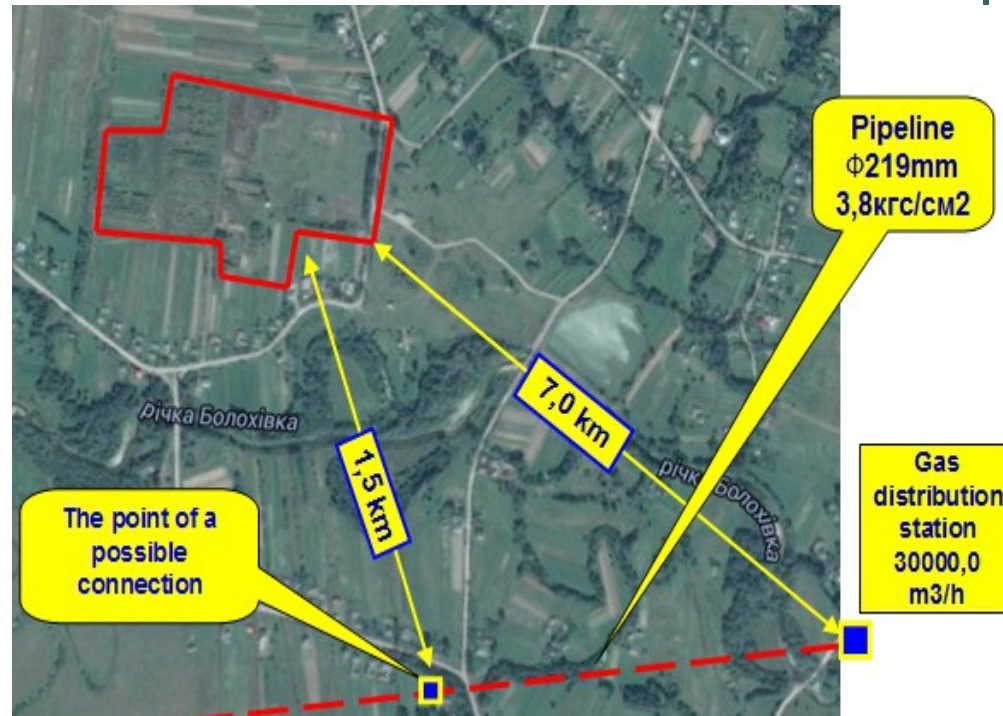
- The existing access road with gravel coating width of 6m.
- The distance from the road of national significance H10 - 25 km
- At a distance of 5 km road – T1419
- Distance to freight station "Kalush"-24 km.
- The distance to the international airport "Ivano-Frankivsk - 60 km.



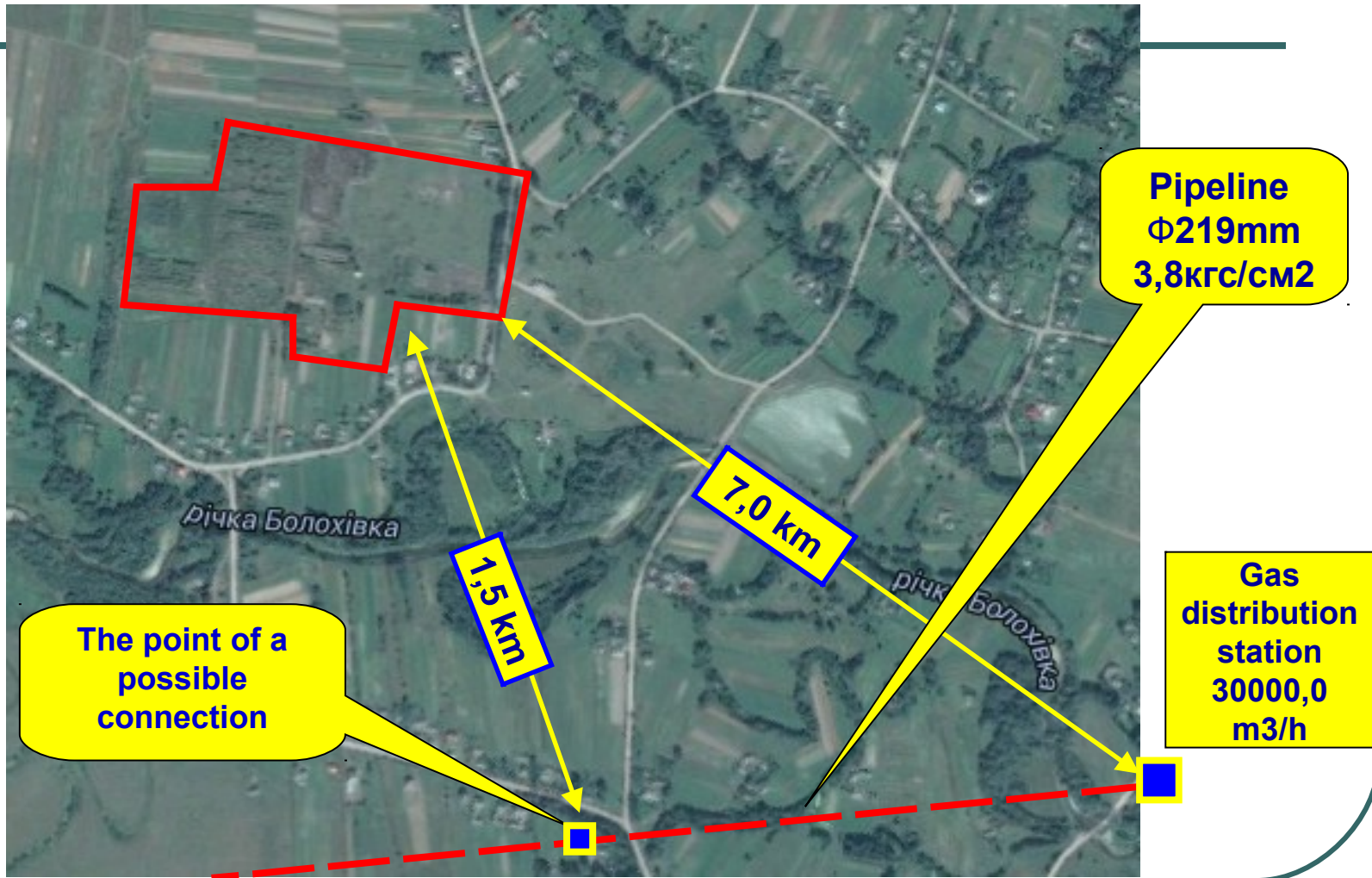
24 km

# Information about gas supply

- Distance to the existing gas pipeline- 1,5 km
- Pipeline diameter – 219 mm
- Gas pressure in the pipeline - 3,8 gf/cm<sup>2</sup>
- Capacity margin of the possible connection to the pipeline - 5000,0 m<sup>3</sup>/h
- Distance to the existing gas distribution station - 7,0 km
- Capacity margin of the gas distribution station - 30000,0 m<sup>3</sup>/h



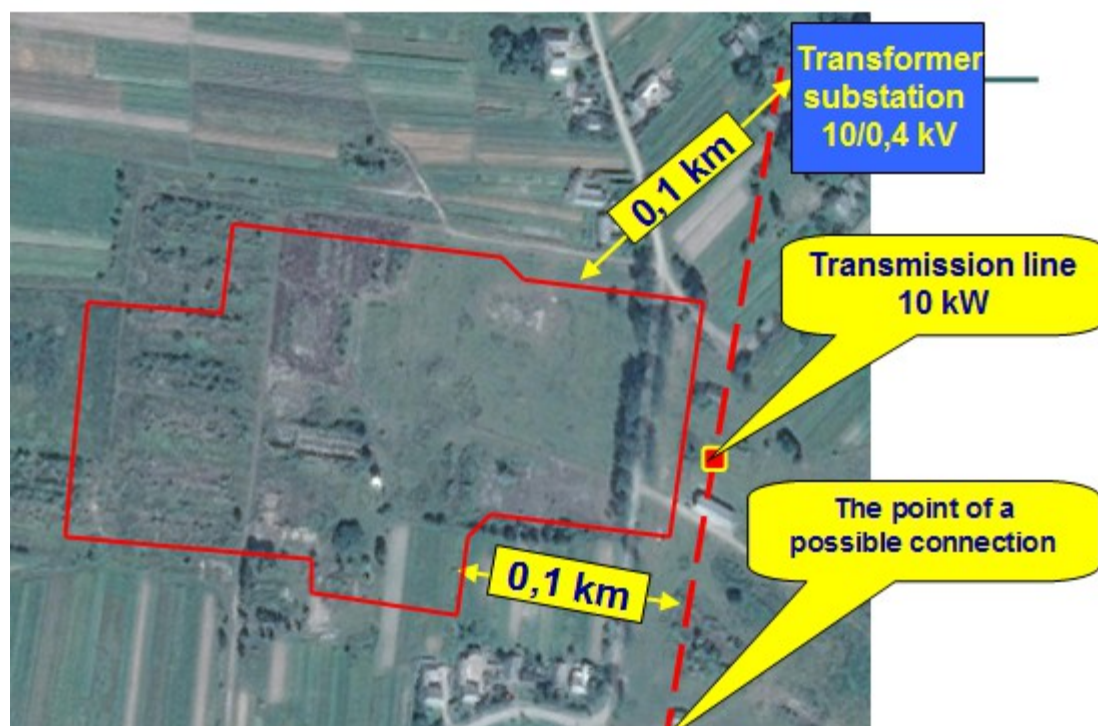
# Information about gas supply



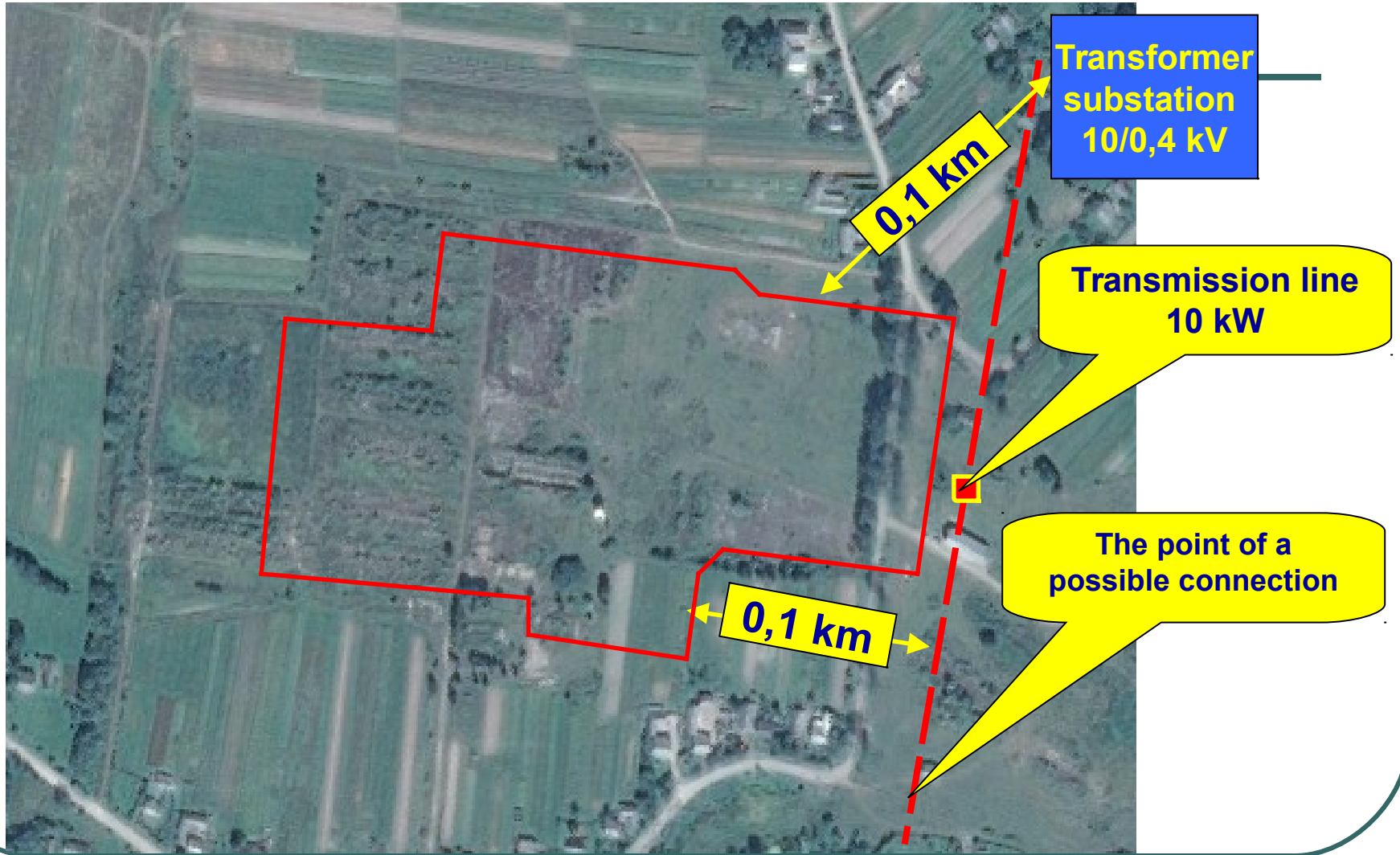


# Transmission network

- Distance to the existing power transmission line – 0,1 km
- Power transmission line voltage – 10 kV.
- Capacity margin of the possible connection to the power transmission line – 20 kW.
- Distance to the existing transformer substation – 0,1 km
- Transformer substation voltage – 10/0,4 kV
- Capacity margin of the transformer substation – 600 kW



# Transmission network



# Information about water supply and about sewage discharge

---

- In the land of water supply and sanitation – no
- Provide land in water supply can be built the infrastructure





## Contacts

|  |   |
|--|---|
| <b>Establishment,<br/>Organization</b>     | <b>Kalush District<br/>Administration<br/>Shevchenko street, 6<br/>Kalush<br/>Ivano-Frankivsk region.<br/>77300<br/>Ukraine</b> |
| <b>Name, surname of contact<br/>person</b> | <b>Nataliia Yosypivna Babii</b>   |
| <b>Phone</b>                               | <b>(03472) 6-03-01</b>  |
| <b>Fax</b>                                 | <b>(03472) 6-00-23</b>  |
| <b>E-mail</b>                              | <b>kalushinvest@gmail.com</b>   |
| <b>Website</b>                             | <b>www.rda.if.ua</b>  |

